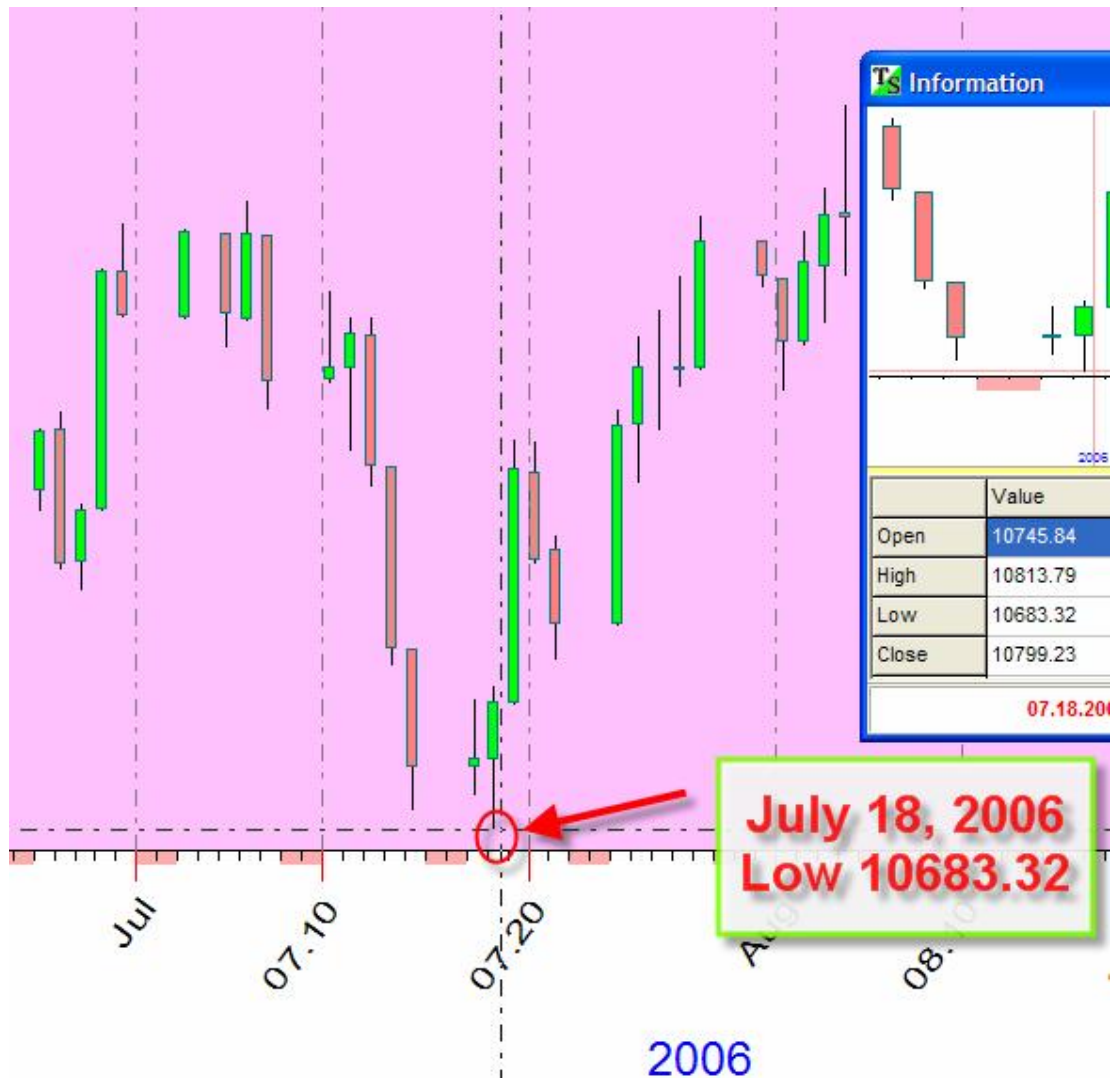


AIR's Online Astrology Services Alphee Lavoie and Sergey Tarassov

Possible support/resistance levels calculator

This service is an application of the technique called planetary lines in financial trading. Planetary lines might be used to reveal the resistance and support levels for stock data graphs.

This is how it works. Select some price data. See a sample of such a graph below.



Here you see the low for Dow Jones Industrial index that occurred on July 18, 2006 at level 10683.32.

Run the service; type the price level, accuracy and data for NYSE opening.

Possible support/resistance levels calculator

Price

Price \$

Range \$

-----Data-----

2006 Time (HH:MM)

Helio Declination Time Zone

Analyze Single planets + Pairs

Calculate!

Planetary levels in the range: 10668.32 10698.32

100 x 2 x (Mars - New Moon) = 10682.83\$

100 x 3 x (Moon) = 10687.73\$

100 x (Mercury - Eclipse) = 10677.64\$

1) Price range
2) Data
3)
4) Results

The program analyses thousands of planetary combinations and finds the most appropriate ones for these price and time data. As you see, the level in our example is related to three planetary combinations:

- 1) $2 \times (\text{Mars} - \text{New Moon position}) = 106.8283$ degrees, or we can modify this formula as $100 \times 2 \times (\text{Mars} - \text{New Moon}) = 10682.83$
- 2) Moon position: $3 \times \text{Moon Position} = 106.8773$ or we can modify this formula as $100 \times 3 \times \text{Moon} = 10687.73$
- 3) Mercury - Eclipse Position

There are options that allow to choose Zodiac's and planetary line's type (planetary positions or an angle between planets).

Please be advised that this is the simplest of the astro forecasts. For a more extensive, in-depth and accurate forecast, please refer to our **Market Trader** software program at www.alphee.com.