

---

## Installing the Market Trader Gold Program

- 1) Double click on the My Computer Icon on the desktop.
- 2) On the next screen double click on the CD Icon.
- 3) All the files on the CD will be displayed.
- 4) Find the SETUP.EXE file, and double click on it.

Install this program in the C:\MT\_Gold directory

You need to restart the computer after the installation is completed.

### DONGLE INSTALLATION

**Don't place the Dongle in the USB port yet. Make Sure you do the following First.**

- 1) Before installing the drivers, please unplug (if it is plugged) LPT/USB dongle from you computer.
- 2) Click on MY Computer icon on the desktop. Click local C Drive. Move down to yellow folder where the Market Trader program was installed.  
Default directory:  
For the Platinum Program the directory is MT\_Platinum  
For the Gold Program the directory is Mt\_Gold.  
For the Titanium Program the directory is MT\_Titanium

Find the **instdrv** icon and click on it.

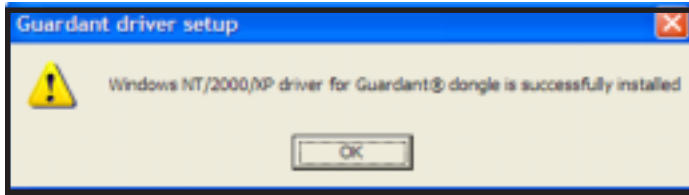


- 3) You will get the next Dialog box:



Click on “Install driver” button.

You will get this message: Telling that the dongle has been installed successfully



## **STEP TWO INSTALLING DONGLE ON YOUR SYSTEM**

If your operating system is **Windows XP** you should follow the instructions below. For **any other version of Windows**, the installation of the dongle is finished, you can plug the dongle in your computer and run the Market Trader program.

For users **Windows XP** use the following instructions to complete the installation:

- 1) **Insert the dongle in the USB port**, wait a bit (usually, it is just seconds) you will get the next Dialog box:



Select “Install the software automatically” option and Click on “Next” button.

- 2) The program will begin the search:



3) You will get the next Dialog box (the searching can take some time)



Press “**Continue Anyway**” button (this window is a recent addition made by Microsoft; as so far, we have found no compatibility problem). Please follow this instruction exactly, otherwise the dongle will not be installed on your computer.

4). You will get the next Dialog box:



Press “Finish” button. The dongle is installed, and you can work with the Market Trader now.

***Important Notice:*** If on your computer there are multiple USB ports, the program will work **ONLY** with the USB port that you used in the installation process.

For technical support Call:  
Air Software 1(860) 232-6521

Visit our site: [www.alphee.com](http://www.alphee.com)  
Email: [alphee@alphee.com](mailto:alphee@alphee.com)